



EXTRUSION  
ISO 9001:2008



FK/HBA55GT05TS

FK/HBA65T06SD

FK/HBA65GVT12DS

FK/HBA75GT06DD

FK/HBA75GVCT30SS

FK/HBA100GVT30SD

FK/HBA100GVT30SD

FK/HBA75GVT12DD

FK/HBA65T06QD

FK/HBA65T06SS

FK/HBA75GVT20SS



An ISO 9001:2008 Company

鳳記國際機械股份有限公司

FONG KEE INTERNATIONAL MACHINERY CO., LTD.

HEAD OFFICE:

台南市永康區正北一路168號

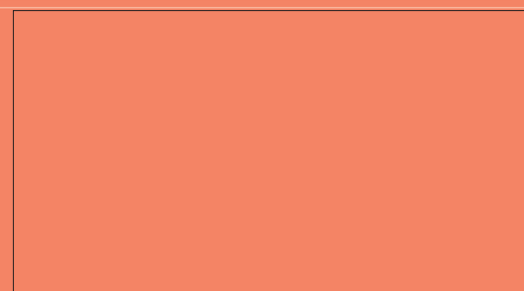
No. 168 Cheng Pei First Road,

Yong-Kang District, Tainan City, Taiwan.

TEL: +886-6-2532157 FAX: +886-6-2533079

<http://www.fki.com> Email: [sales@fki.com](mailto:sales@fki.com)

AGENT:



HBA-0-2013-05-1000E

# SHUTTLE TYPE HBA Series CONTINUOUS EXTRUSION SYSTEM BLOW MOULDING MACHINE





Extruder with barrier flight screw design and mixing head suitable to process high molecular weight blow moldable grade high density polyethylene.

For different grade material or to obtain even higher mixture and output, grooved feeder extruder is available as an option.

Reduction helical gear box with thrust bearing of SKF brand ex Swedish origin used to ensure long running life.

Extruder with nodding function for horizontal shuttle movement.

Main drive of DC motor or AC motor with vector inverter control as buyer's option.

25mm extruder with gear motor drive adapted to the extruding die head for view stripe processing.

Extruding Die of torpedo combined with offset spider design allows double layer flow distribution for even and uniform radial wall thickness, and rapid color change.

Single, double, triple, up to six head are available as an option.

Parison cut by cold knife or hot knife completed with pinch off device for pre-blow function provided as per production needs.

Mold clamping unit of single or double station are available as per the production capacity requirements.

Clamping unit moves horizontally, positioned and sits on lineal rack bearings which gives high stability for clamp and carriage movement as well as energy saving.

The mold platens moved by toggle device give homogeneous distribution of closing force, ensure perfect welding line for the bottles and containers.

Closed loop proportional valves for the carriage stroke as well as the platens closing and opening.

Tiebar-less clamping unit design gives free access for mold change.

In-line auto deflashing device with gripper to move the finished bottle in connection to the merge conveyor for leak detector or collecting table.

Entire machine is controlled by multiprocessor from Barber Colman, Maco Compact with touch color screen operation monitor.

A total solution from heating / cooling, pre heating, extruder speed, 100 points parison control, hydraulic, pneumatic and sequence control, plus alarm, recipe storage, and remote control thru internet connection.

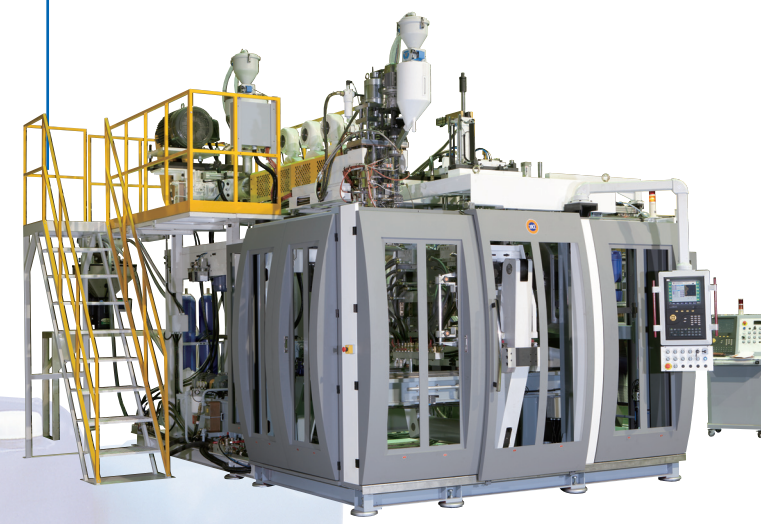
### FK/HBA55G/100G/55GT30SD

Three Layer Co-Extrusion,  
Single Head - Double Station  
For 20LT - 30LT Jerry Can



### FK/HBA75GVCT30SS

Compact Type, Single Head - Single Station  
For 20LT - 30LT Jerry Can



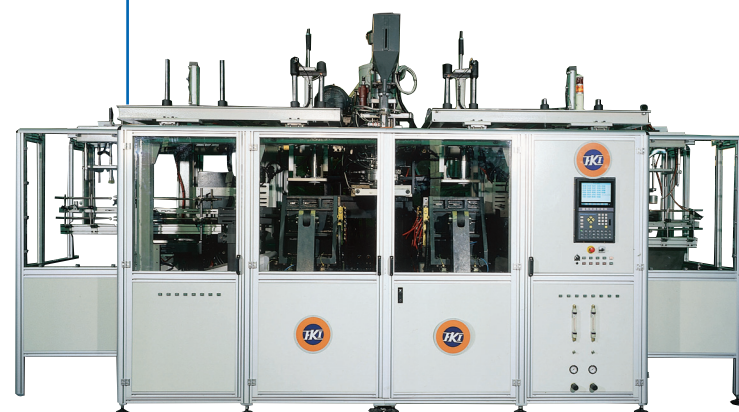
### FK/HBA55GT05TS

Triple Head - Single Station  
For 120ml - 500ml Shampoo Bottle



### FK/HBA65GT06SD

Single Head - Double Station  
For 3LT - 6LT Lube Oil Bottle



### FK/HBA65GVT12DS

Double Head - Single Station  
For 3LT- 5LT Detergent Bottle



### FK/HBA75GT06DD

Double Head - Double Station  
For 2LT - 3LT Dairy Bottle with Handle



### FK/HBA75GVT20SS

Single Head - Single Station  
For 10LT - 20LT Jerry Can



### FK/HBA100GVT30SD

Single Head - Double Station  
For 20LT- 30LT Jerry Can





### Advantage Features & Design in Total Automation

1. 3 components gravimetric auto dosing system

2. Residue conveyor+crusher + air separator.

3. Single head with view stripe extruder

4. Quadruple head with view stripe extruder

5. Five head

# HBA series

8. Multi process control operation panel

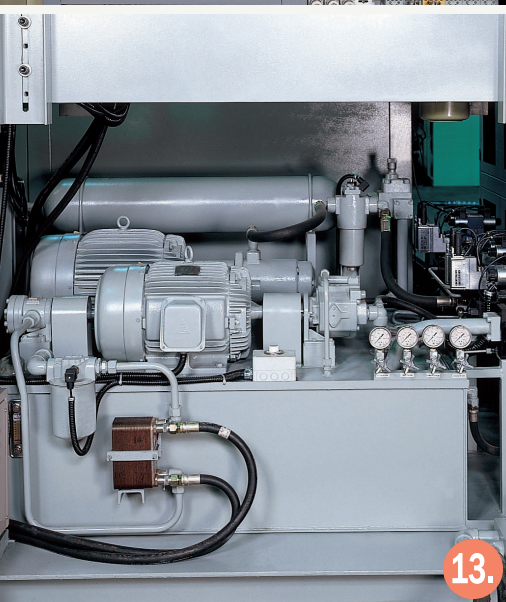
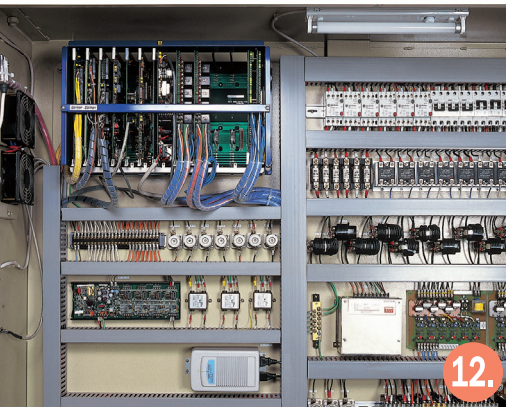
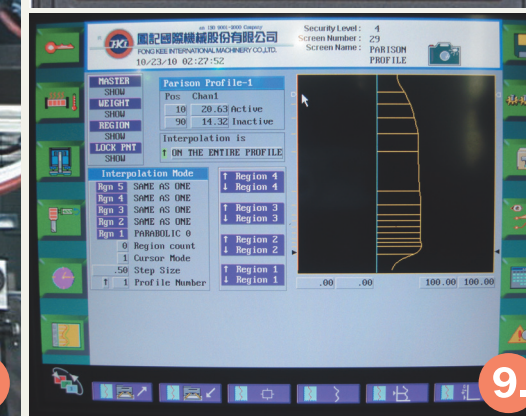
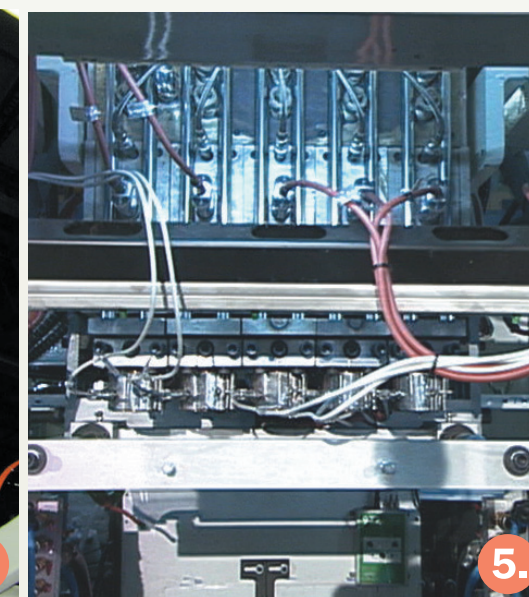
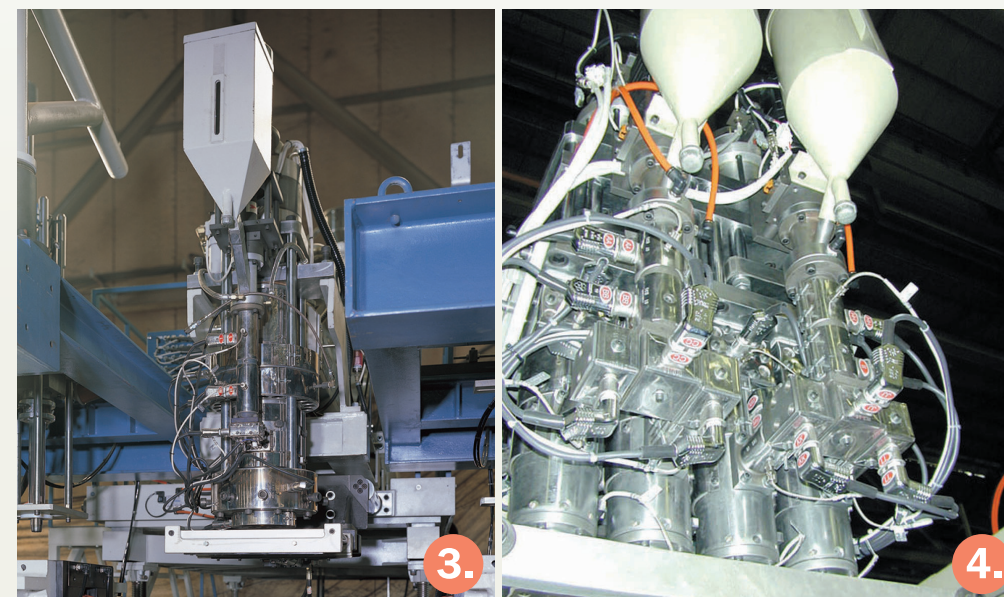
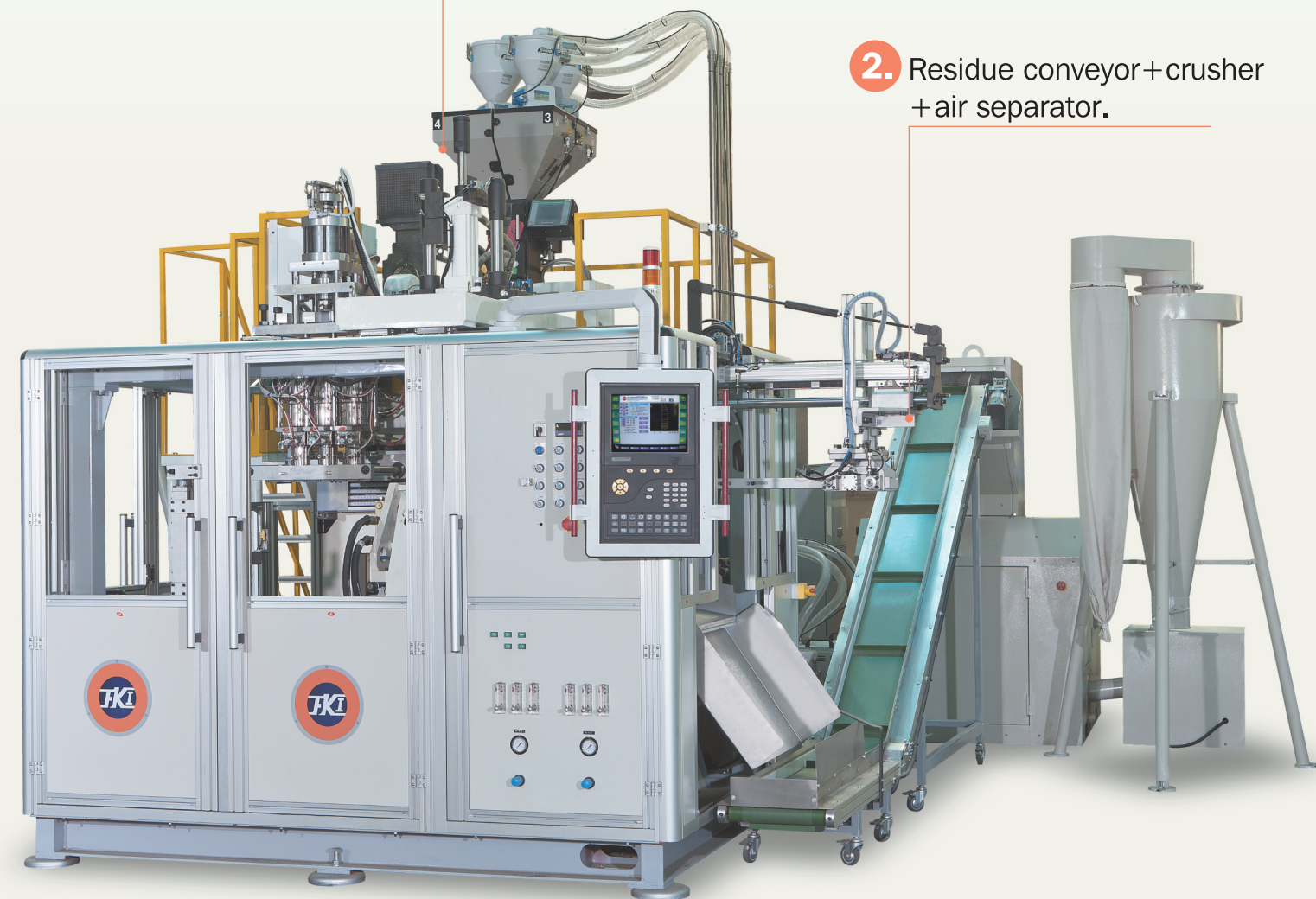
9. Parison control screen

10. Parison control screen

11. Gripper

12. Electrical panel

13. Hydraulic unit





HBA series

SHUTTLE TYPE CONTINUOUS EXTRUSION SYSTEM BLOW MOULDING MACHINE

Extruder:

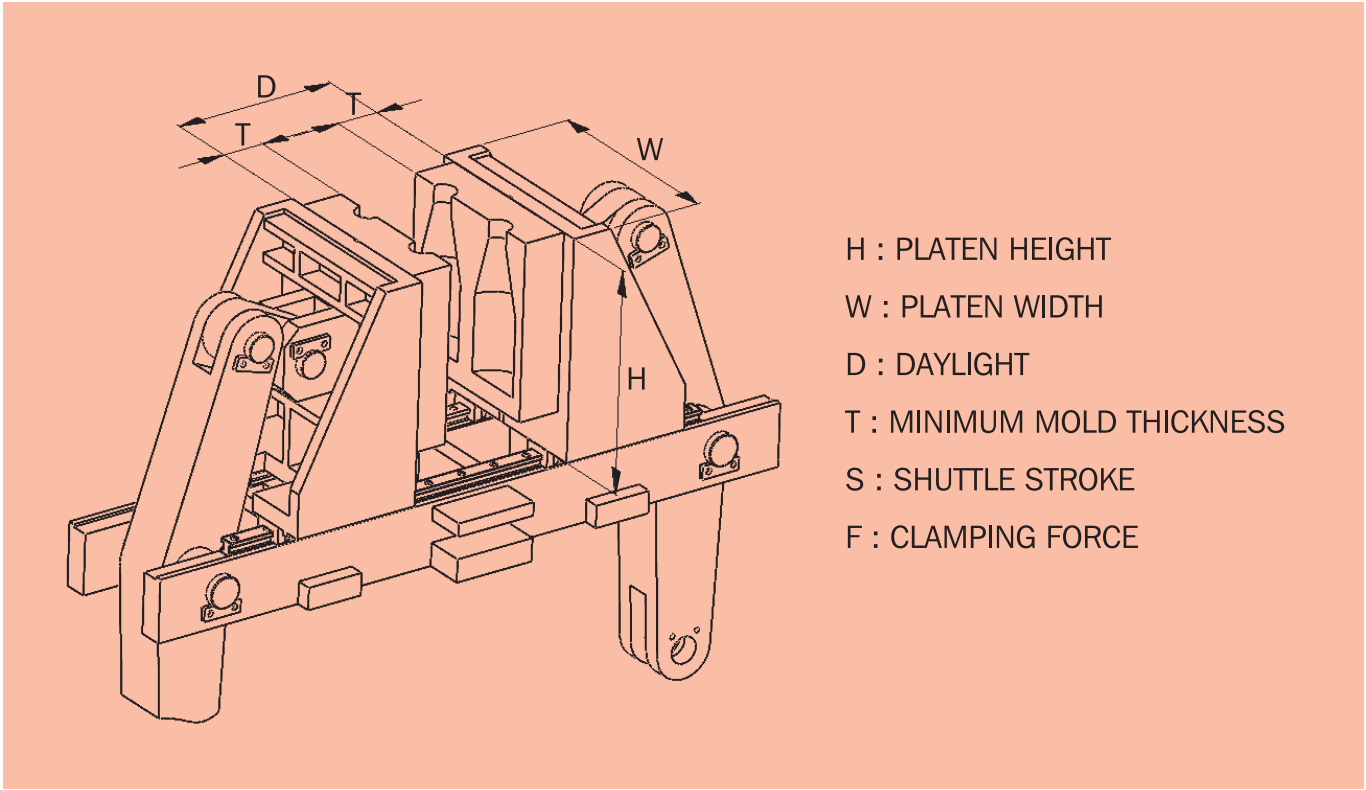
MODEL	UNIT	HBA55	HBA65	HBA75	HBA100
EXTRUDER		SMOOTH BORE (S) or GROOVED FEEDER (G)			
Screw Diameter	mm	55	65	75	100
Screw L/D		24 / 30	24 / 30	24 / 30	30
Main Drive	HP	30 / 40	40 / 60	60 / 75	125
Extrusion Capacity	kg / hr	60 / 90	80 / 170	100 / 210	300

Extrusion capacity will be varied based on material MFI

Die Head:

Bottle Size	200~400ml		500~1000ml		1~3 LT		4~6 LT		8~10 LT	10~30 LT
Center distance	80mm	100mm	100mm	120mm	140mm	160mm	250mm	320mm	—	—
Single	—	—	—	●	●	●	●	●	—	—
Double	—	—	—	●	●	●	●	●	—	—
Triple	●	●	●	●	●	●	●	●	—	—
Quad	●	●	●	●	●	●	●	●	—	—
Five	●	●	●	●	●	●	●	●	—	—
Six	●	●	●	●	●	●	●	●	—	—

Specifications are subject to change without prior notice.



H : PLATEN HEIGHT  
W : PLATEN WIDTH  
D : DAYLIGHT  
T : MINIMUM MOLD THICKNESS  
S : SHUTTLE STROKE  
F : CLAMPING FORCE

STANDARD ATTACHMENT:

1. Extruder height adjustable.
2. Tiebar-less clamp unit of shuttle type.
3. Linear bearing guide for carriage & clamp.
4. Proportional valve control for carriage & clamp movement.
5. Auto deflashing deviece
6. Multi process control by Barber Colman, MACO Compact System.
7. 100 Points parison control with Moog servo valve.
8. Safety door with interlock system for electric / hydraulic /pneumatic system.

OPTIONAL DEVICE:

1. 3 components gravimetric auto dosing system.
2. View stripe extruder.
3. Merge conveyor.
4. In line leak detector.
5. Mould tooling, deflash mold
6. Residue recycle granulator & conveyor.

Clamp Platen Design:

MODEL	H	W	D	T	S	F
	mm	mm	mm	mm	mm	ton
T03	400	320	125 - 425	70	470	7
T04	300	600	125 - 425	70	720	10
T05	300	450	125 - 425	70	600	10
T06	470	450	158 - 546	85	600	10
T10	400	650	125 - 425	70	770	15
T12	540	540	234 - 700	125	720	22
T13	400	950	125 - 425	70	1050	25
T14	470	700	234 - 700	125	880	25
T15	540	850	234 - 700	125	1030	25
T16	470	1200	158 - 546	85	1300	35
T20	540	540	340 - 850	175	720	22
T25	630	540	340 - 850	175	720	25
T26	630	540	480 - 1000	250	800	25
T30	720	550	480 - 1000	250	920	30
T40	720	720	480 - 1000	250	920	40